



**Nidhi Hospital**  
*Adding Health to Life*

## NIDHI HOSPITAL HEALTH CHECK UPS



📍 Stadium Commerce College Road,  
Navrangpura, Ahmedabad 380 009.

☎ 079-4023 21 21 (30 lines), 079-2642 66 31, 2642 66 51

✉ [nidhihospital2011@gmail.com](mailto:nidhihospital2011@gmail.com)

🌐 [www.nidhihospital.org](http://www.nidhihospital.org)



**"Adding Health to Life"**

Dear Friends,

The World Health Organization (WHO) defined health in its broader sense in 1946 as ***"a state of complete physical, mental, and social well-being and not merely the absence of disease or infirmity."***

Our body is a complex system working continuously like a machine. And its our responsibility to take care of it. Thanks to the advancements of modern medicine, people around the world are living much longer lives. And now the goal of medicine is not just to improve the longevity of life but its quality as well.

Just like investing in a retirement fund, it is extremely important to invest in your health today in order to enjoy a healthy and productive life in your later years. Of course, unexpected circumstances are part of life and often unavoidable. Sometimes sudden accidents and illnesses can hamper our ambitions and seriously reduce our quality of life. For this reason, it is extremely important for us to do everything in our means to mitigate the risks of the unknown.

By educating ourselves as much as we can about our health and taking the proper measures to take care of our bodies, we can greatly increase our chances of avoiding or at least correcting and managing health problems as soon as they begin to surface.

Nidhi Hospital likes to prevent and cure health problems and promote good health in Community by its motto of **"Adding Health to life"**

Health Check-ups are extremely important. It helps you find out if you have a particular disease or condition even if you feel perfectly well, without any symptoms and/or signs of disease. Early detection, followed by treatment and good control of the condition can result in better outcomes, and lowers the risk of serious complications. It is therefore important to get yourself screened even if you feel perfectly healthy.

Health check-ups or health screening involves the use of tests, physical examinations or other procedures to detect disease early in people who look or feel well. This is different from diagnostic tests which are done when someone is already showing signs and/or symptoms of a disease.

Therefore, by investing today in tomorrow, we can transform the unknown and unexpected into the known and managed.

Moving a step ahead for a healthy life, Nidhi Hospital presents variety of Health check plans at affordable rates.

Dr. Sunil D. Popat  
Medical Director

## NIDHI BASIC

1500/-

- CBC
- FBS / PPBS
- LIPID PROFILE
- S. CREATININE
- SGPT
- TSH, CALCIUM
- USG ABDOMEN & PELVIS
- ECG, X-RAY CHEST PA
- PHYSICIAN CONSULTATION
- DIETICIAN CONSULTATION



## NIDHI RHEUMATOID

1600/-

- CBC
- ESR
- CRP
- RBS
- ANA by IF
- S.URIC ACID
- X-RAY BOTH KNEES <sup>AP</sup><sub>LAT</sub>
- RA FACTOR
- PHYSICIAN CONSULTATION
- ORTHOPEDIC SURGEON CONSULTATION
- DIETICIAN CONSULTATION



## NIDHI CARDIAC

1900/-

- CBC
- ESR
- FBS
- LIPID PROFILE
- ECG
- TMT
- 2D Echo
- X-RAY CHEST PA
- PHYSICIAN CONSULTATION
- DIETICIAN CONSULTATION



## NIDHI DIABETIC

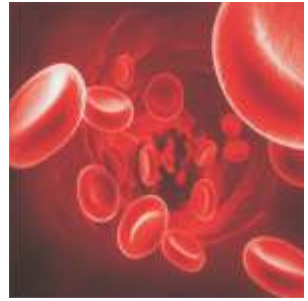
1900/-

- FBS / PPBS
- HB A1c
- URINE FOR MICRO ALBUMIN
- S. CREATININE
- X-RAY CHEST PA
- S.LIPID PROFILE
- USG ABDOMEN & PELVIS
- PHYSICIAN CONSULTATION
- OPHTHALMIC CONSULTATION
- DIETICIAN CONSULTATION
- C-PEPTIDE



## NIDHI ANAEMIA/NUTRITIONAL DEFICIENCY CHECK UP **2100/-**

- CBC
- URINE ANALYSIS
- STOOL ANALYSIS
- VIT B12
- VIT D3
- S.IRON
- S. CALCIUM
- S.PROTEINS
- X-RAY CHEST PA
- USG ABDOMEN & PELVIS
- PHYSICIAN CONSULTATION
- DIETICIAN CONSULTATION



## NIDHI WELL WOMAN **2200/-**

- CBC
- FBS/PPBS
- LIPID PROFILE
- LIVER PROFILE
- SKELETAL PROFILE
- PAP SMEAR, TSH
- ECG
- X-RAY CHEST PA
- USG ABDOMEN & PELVIS
- PHYSICIAN CONSULTATION
- GYNAECOLOGIST CONSULTATION
- DIETICIAN CONSULTATION



## NIDHI EXECUTIVE WOMAN **3400/-**

- CBC
- FBS / PPBS
- LIPID PROFILE
- KIDNEY PROFILE
- LIVER PROFILE
- SKELETAL
- TSH
- ECG, TMT, X-RAY CHEST PA
- PHYSICIAN CONSULTATION
- SURGEON CONSULTATION
- GYNAECOLOGIST CONSULTATION
- DIETICIAN CONSULTATION



## NIDHI EXECUTIVE MAN **3600/-**

- CBC
- FBS / PPBS
- LIPID PROFILE
- KIDNEY PROFILE
- LIVER PROFILE
- SKELETAL
- TSH, PSA
- ECG, TMT, X-RAY CHEST PA
- PHYSICIAN CONSULTATION
- SURGEON CONSULTATION
- DIETICIAN CONSULTATION



## NIDHI PRE EMPLOYMENT FEMALE 3800/-

- CBC
- ESR
- FBS
- LIVER PROFILE
- KIDNEY PROFILE
- URINE ANALYSIS
- THYROID FUNCTION TEST
- BLOOD GROUP
- INFECTIOUS DISEASE
- ECG
- USG ABDOMEN & PELVIS
- X-RAY CHEST PA
- PHYSICIAN CONSULTATION
- OPHTHALMIC CONSULTATION
- GYNAECOLOGIST CONSULTATION
- DIETICIAN CONSULTATION
- ENT CONSULTATION



## NIDHI SENIOR CITIZEN MAN 3800/-

- CBC
- FBS/PPBS
- KIDNEY PROFILE
- LIVER PROFILE
- SKELETAL
- TSH , PSA
- PFT, ECG
- X-RAY CHEST PA
- USG ABDOMEN & PELVIS
- PHYSICIAN CONSULTATION
- SURGEON CONSULTATION
- ORTHOPEDIC SURGEON CONSULTATION
- DIETICIAN CONSULTATION
- UROLOGIST CONSULTATION



## NIDHI SENIOR CITIZEN WOMAN 3900/-

- CBC
- FBS/PPBS
- KIDNEY PROFILE
- LIVER PROFILE
- SKELETAL
- TSH
- PFT, ECG
- X-RAY CHEST PA
- USG ABDOMEN & PELVIS
- PHYSICIAN CONSULTATION
- SURGEON CONSULTATION
- ORTHOPEDIC SURGEON CONSULTATION
- DIETICIAN CONSULTATION
- GYNAECOLOGIST CONSULTATION



## NIDHI PRE EMPLOYMENT MALE 4000/-

- CBC WITH ESR
- FBS
- LIVER PROFILE
- KIDNEY PROFILE
- URINE ANALYSIS
- THYROID FUNCTION TEST
- BLOOD GROUP
- INFECTIOUS DISEASE
- ECG
- USG ABDOMEN & PELVIS
- X-RAY CHEST PA
- PHYSICIAN CONSULTATION
- SURGEON CONSULTATION
- OPHTHALMIC CONSULTATION
- DIETICIAN CONSULTATION
- ENT CONSULTATION



## NIDHI GOLD MAN 7000/-

- CBC
- FBS /PPBS
- LIPID PROFILE
- KIDNEY PROFILE
- LIVER PROFILE
- SKELETAL
- ELECTROLYTES
- INFECTIOUS DISEASE
- HORMONES
- HbA1C
- VIT B 12
- VIT D3
- URINE MICROALBUMINURIA
- PFT, ECG
- TMT
- 2D ECHO
- X-RAY CHEST PA
- USG ABDOMEN & PELVIS
- PHYSICIAN CONSULTATION
- SURGEON CONSULTATION
- DIETICIAN CONSULTATION
- UROLOGIST CONSULTATION



## NIDHI GOLD WOMAN 7000/-

- CBC
- FBS /PPBS
- LIPID PROFILE
- KIDNEY PROFILE
- LIVER PROFILE
- SKELETAL PROFILE
- ELECTROLYTES
- PAP SMEAR
- INFECTIOUS DISEASE
- HORMONES
- HbA1C
- VIT B 12
- VIT D3
- URINE MICROALBUMINURIA
- PFT, ECG
- TMT
- 2D ECHO
- X-RAY CHEST PA
- USG ABDOMEN & PELVIS
- PHYSICIAN CONSULTATION
- SURGEON CONSULTATION
- DIETICIAN CONSULTATION
- GYNAECOLOGIST CONSULTATION



## NIDHI OBESITY 8000/-

- CBC
- LIVER FUNCTION TEST
- THYROID FUNCTION TEST
- KIDNEY FUNCTION TEST
- URINE ANALYSIS
- LIPID PROFILE
- GTT/HbA1c
- VIT B 12
- VIT D3
- IRON
- CALCIUM
- ECG
- X-RAY CHEST PA
- USG ABDOMEN & PELVIS
- 2D ECHO
- TMT
- S. INSULIN
- C PEPTIDE
- PHYSICIAN CONSULTATION
- SURGEON CONSULTATION
- ORTHOPEDIC SURGEON CONSULTATION
- DIETICIAN CONSULTATION



## NIDHI SPECIAL GASTRO - MAN 25000/-

- CBC
- DIABETIC PROFILE
- LIPID PROFILE
- KIDNEY PROFILE
- LIVER PROFILE
- SKELETAL PROFILE
- ELECTROLYTES
- INFECTIOUS DISEASE
- HORMONES
- PFT, ECG
- TMT, 2D ECHO
- X RAY CHEST PA
- USG ABDOMEN & PELVIS
- CT ABDOMEN & PELVIS
- UGI ENDOSCOPY
- COLONOSCOPY
- PHYSICIAN CONSULTATION
- SURGEON CONSULTATION
- DIETICIAN CONSULTATION
- 1 DAY STAY



## NIDHI SPECIAL GASTRO WOMAN 25000/-

- CBC
- DIABETIC PROFILE
- LIPID PROFILE
- KIDNEY PROFILE
- LIVER PROFILE
- SKELETAL PROFILE
- ELECTROLYTES
- PAP SMEAR
- INFECTIOUS DISEASE
- HORMONES
- PFT, ECG
- TMT, 2D ECHO
- X RAY CHEST PA
- USG ABDOMEN & PELVIS
- CT ABDOMEN & PELVIS
- UGI ENDOSCOPY
- COLONOSCOPY
- PHYSICIAN CONSULTATION
- SURGEON CONSULTATION
- DIETICIAN CONSULTATION
- 1 DAY STAY



## NIDHI SPECIAL NRI-MAN 35000/-

- CBC
- DIABETIC PROFILE
- LIPID PROFILE
- KIDNEY PROFILE
- LIVER PROFILE
- SKELETAL PROFILE
- ELECTROLYTES
- INFECTIOUS DISEASE
- HORMONES
- PFT, ECG
- TMT, 2D ECHO
- CT BRAIN
- CT THORAX
- CT ABDOMEN & PELVIS
- USG ABDOMEN & PELVIS
- X RAY CHEST PA
- UGI ENDOSCOPY
- COLONOSCOPY
- PHYSICIAN CONSULTATION
- SURGEON CONSULTATION
- DIETICIAN CONSULTATION
- 1 DAY STAY



## NIDHI SPECIAL NRI-WOMAN 35000/-

- CBC
- DIABETIC PROFILE
- LIPID PROFILE
- KIDNEY PROFILE
- LIVER PROFILE
- SKELETAL PROFILE
- ELECTROLYTES
- PAP SMEAR, HORMONES
- INFECTIOUS DISEASE
- PFT, ECG
- TMT, 2D ECHO
- CT BRAIN
- CT THORAX
- CT ABDOMEN & PELVIS
- USG ABDOMEN & PELVIS
- BIL. MAMMOSONOGRAPHY
- X RAY CHEST PA
- UGI ENDOSCOPY
- COLONOSCOPY
- PHYSICIAN CONSULTATION
- SURGEON CONSULTATION
- DIETICIAN CONSULTATION
- GYNAECOLOGIST CONSULTATION
- 1 DAY STAY



Your Body is your most priceless possession, Do take care of it

## EMPANELLED INSURANCE COMPANIES & TPAs.

 New India Insurance Co.	 National Insurance Co.	 Oriental Insurance Co.	 United India Insurance Co.
 Arvind Mill	 Universal Sompoo Health Insurance	 HDFC Ergo Health Insurance	 FUTURE GENERALI
 RELIGARE	 NIRMA	 Chola Mandalam Health Insurance Co	 Liberty Videocon
 Cigna TTK Health Insurance	 Max Bupa Health insurance	 IFFCO TOKIO GENERAL INSURANCE	 Allianz
 IFFCO	 Anmol Medicare (TPA) LTD	 MAGMA HDI	 GENES INDIA TPA LTD.
 Health India (TPA) Services PVT. LTD.	 Heritage Health	 Prarambh Health	 Med Save
 MD INDIA	 Medi Assist India (TPA) PVT. LTD.	 Vidal Health	 MEDICARE
 DHFL GENERAL INSURANCE	 United Healthcare PAREKH	 TATA AIG INSURANCE WITH YOU ALWAYS	

## EMPANELLED CORPORATES



  
**Nidhi Hospital**  
*Adding Health to Life*

## NIDHI HOSPITAL

Stadium Commerce College Road,  
Navrangpura, Ahmedabad 380 009.

☎ 079-4023 21 21 (30 lines), 079-2642 66 31, 2642 66 51

✉ nidhihospital2011@gmail.com

🌐 www.nidhihospital.org



For Appointments & Inquiries kindly contact

**Dr. Sachin 99988 80843**

**PRO 99099 17090**