



**Nidhi Hospital**  
*Adding Health to Life*



## NIDHI HOSPITAL WELLNESS CENTRE

Stadium Commerce College Road, Navrangpura,  
Ahmedabad 380 009.

Tel. : 079-4023 21 21 (30 lines), 079-2642 66 31, 2642 66 51

E-mail : [nidhihospital2011@gmail.com](mailto:nidhihospital2011@gmail.com) • Web : [www.nidhihospital.org](http://www.nidhihospital.org)



**"Adding Health to Life"**

Take care of your body, its the only place you have to live

**Health** is basically defined as the functional or metabolic efficiency of a living organism. In humans, it is the general condition of a person's mind and body, usually means free from illness, injury or any kind of pain as in "good health" or "healthy".

The World Health Organization (WHO) defined health in its broader sense in 1946 as *"a state of complete physical, mental, and social well-being and not merely the absence of disease or infirmity."*

Our body is a complex system working continuously like a machine. And its our responsibility to take care of it.

Thanks to the advancements of modern medicine, people around the world are living much longer lives. And now the goal of medicine is not just to improve the longevity of life but its quality as well.

Just like investing in a retirement fund, it is extremely important to invest in your health today in order to enjoy a healthy and productive life in your later years. Of course, unexpected circumstances are part of life and often unavoidable. Sometimes sudden accidents and illnesses can hamper our ambitions and seriously reduce our quality of life. For this reason, it is extremely important for us to do everything in our means to mitigate the risks of the unknown.

By educating ourselves as much as we can about our health and taking the proper measures to take care of our bodies, we can greatly increase our chances of avoiding or at least correcting and managing health problems as soon as they begin to surface.

Therefore, by investing today in tomorrow, we can transform the unknown and unexpected into the known and managed.

Nidhi Hospital undertakes the responsibility to prevent and cure health problems and promote good health in humans compiling by its motto of **"Adding Health to life"**

Health Check-ups are extremely important. It helps you find out if you have a particular disease or condition even if you feel perfectly well, without any symptoms and/or signs of disease. Early detection, followed by treatment and good control of the condition can result in better outcomes, and lowers the risk of serious complications. It is therefore important to get yourself screened even if you feel perfectly healthy.

Health check-ups or health screening involves the use of tests, physical examinations or other procedures to detect disease early in people who look or feel well. This is different from diagnostic tests which are done when someone is already showing signs and/or symptoms of a disease.

Moving a step ahead for a healthy life, Nidhi Hospital presents variety of Health check plans at affordable rates.

[www.nidhihospital.org](http://www.nidhihospital.org)

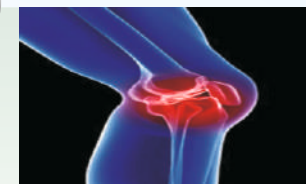
## NIDHI EXPRESS 800/-

- CBC -ESR
- FBS
- BLOOD GROUP
- URINE ROUTINE
- S. CHOLESTEROL
- CREATININE
- SGPT
- ECG
- DOCTOR CONSULTATION
- CONSULTATION-DENTIST
- CONSULTATION-DIETICIAN



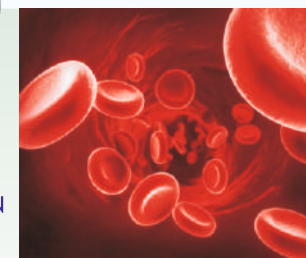
## NIDHI BONE HEALTH 1600/-

- CBC WITH ESR
- URIC ACID
- CALCIUM
- PROTEINS
- BONE MARROW DENSITY
- CONSULTATION ORTHOPEDICIAN



## NIDHI ANAEMIA/NUTRITIONAL DEFICIENCY CHECK UP 2600/-

- CBC
- URINE ANALYSIS
- STOOL ANALYSIS
- VIT B12
- VIT D3
- S. IRON
- S. CALCIUM
- S. PROTEINS
- X-RAY CHEST
- SONOGRAPHY ABDOMEN
- CONSULTATION - PHYSICIAN
- CONSULTATION-DIETICIAN



## NIDHI CARDIAC 1300/-

- CBC -ESR
- FBS
- LIPID PROFILE
- ECG
- TMT
- X-RAY CHEST
- DOCTOR CONSULTATION
- CONSULTATION-DENTIST
- CONSULTATION-DIETICIAN



## NIDHI BASIC 1500/-

- CBC
- FBS / PPBS
- LIPID PROFILE
- S. CREATININE
- SGPT
- TSH, CALCIUM
- ECG, X-RAY CHEST
- CONSULTATION - PHYSICIAN
- CONSULTATION-DENTIST
- CONSULTATION-DIETICIAN



## NIDHI WELL WOMAN 2700/-

- CBC
- FBS/PPBS
- LIPID PROFILE
- LIVER PROFILE
- SKELETAL PROFILE
- PAP SMEAR, TSH
- ECG, X-RAY CHEST
- SONOGRAPHY ABDOMEN
- CONSULTATION - PHYSICIAN
- CONSULTATION-GYNAECOLOGIST
- CONSULTATION - DENTIST
- CONSULTATION-DIETICIAN



## NIDHI RHEUMATOID 1500/-

- CBC WITH ESR
- CRP
- RBS
- ANA
- S. URIC ACID
- RA FACTOR
- CONSULTATION - PHYSICIAN
- CONSULTATION-ORTHOPEDICIAN
- CONSULTATION-DIETICIAN



## NIDHI EXECUTIVE 2850/-

- CBC
- FBS / PPBS
- LIPID PROFILE
- KIDNEY PROFILE
- LIVER PROFILE
- SKELETAL
- TSH, PSA
- ECG, TMT, X-RAY CHEST
- CONSULTATION - PHYSICIAN
- CONSULTATION-SURGEON
- CONSULTATION-DENTIST
- CONSULTATION-DIETICIAN



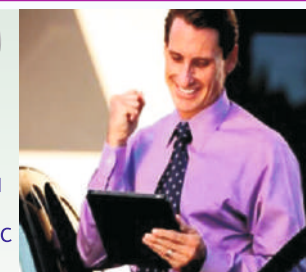
## NIDHI DIABETIC 1650/-

- FBS / PPBS
- HB A1c
- URINE FOR MICRO ALBUMIN
- S. CREATININE
- S. LIPID PROFILE
- DOCTOR CONSULTATION
- DOCTOR -OPHTHALMIC
- CONSULTATION-DENTIST
- CONSULTATION-DIETICIAN



## NIDHI PRE EMPLOYMENT MALE 2500/-

- CBC WITH ESR
- FBS
- LIVER PROFILE
- KIDNEY PROFILE
- URINE ANALYSIS
- THYROID FUNCTION TEST
- BLOOD GROUP
- INFECTIOUS DISEASE
- ECG
- X-RAY CHEST
- CONSULTATION-PHYSICIAN
- CONSULTATION-SURGEON
- CONSULTATION-OPHTHALMIC
- CONSULTATION- ENT





### NIDHI PRE EMPLOYMENT FEMALE 2500/-

- CBC WITH ESR
- FBS
- LIVER PROFILE
- KIDNEY PROFILE
- URINE ANALYSIS
- THYROID FUNCTION TEST
- BLOOD GROUP
- INFECTIOUS DISEASE
- ECG
- X-RAY CHEST
- CONSULTATION-PHYSICIAN
- CONSULTATION-SURGEON
- CONSULTATION-OPHTHALMIC
- CONSULTATION-GYNAECOLOGIST
- CONSULTATION- ENT



### NIDHI BREAST CANCER SCREENING CHECK UP 2800/-

- CBC WITH ESR
- CEA
- RBS
- X-RAY-CHEST
- SONOGRAPHY OF ABDOMEN
- MAMMOSONOGRAPHY
- CONSULTATION - SURGEON
- CONSULTATION - PHYSICIAN



### NIDHI SENIOR CITIZEN 3000/-

- CBC
- FBS/PPBS
- KIDNEY PROFILE
- LIVER PROFILE
- SKELETAL
- TSH, PSA
- PFT, ECG
- CONSULTATION-PHYSICIAN
- CONSULTATION - ORTHOPAEDICIAN
- CONSULTATION-SURGEON
- CONSULTATION-DENTIST
- CONSULTATION-DIETICIAN
- X-RAY CHEST
- SONOGRAPHY ABDOMEN



### NIDHI CANCER DETECTION MALE 3000/-

- CBC
- CRP
- TUMOUR MARKERS
- PROSTATE CANCER MARKER
- URINE ANALYSIS
- STOOL ANALYSIS
- THYROID FUNCTION TEST
- X-RAY CHEST
- SONOGRAPHY ABDOMEN
- CONSULTATION-PHYSICIAN
- CONSULTATION-SURGEON



### NIDHI CANCER DETECTION FEMALE 5000/-

- CBC
- CRP
- TUMOUR MARKERS
- PAP SMEAR
- URINE ANALYSIS
- STOOL ANALYSIS
- THYROID FUNCTION TEST
- X-RAY CHEST
- SONOGRAPHY ABDOMEN
- CONSULTATION-PHYSICIAN
- CONSULTATION-SURGEON
- CONSULTATION - GYNAECOLOGIST



### NIDHI OBESITY 9100/-

- CBC
- LIVER FUNCTION TEST
- THYROID FUNCTION TEST
- KIDNEY FUNCTION TEST
- URINE ANALYSIS
- LIPID PROFILE
- GTT/HbA1c
- VIT B 12
- VIT D3
- IRON
- CALCIUM
- ECG
- X-RAY CHEST
- SONOGRAPHY ABDOMEN
- ECHO CARDIOGRAPHY
- TREAD MILL TEST
- CONSULTATION - PHYSICIAN
- CONSULTATION SURGEON
- CONSULTATION-ORTHOPEDICIAN
- CONSULTATION-DIETICIAN



### NIDHI GOLD MAN 7500/-

- CBC
- FBS /PPBS
- LIPID PROFILE
- KIDNEY PROFILE
- LIVER PROFILE
- SKELETAL
- ELECTROLYTES
- INFECTIOUS DISEASE
- HORMONES
- HbA1C
- VIT B 12
- VIT D3
- URINE MICROALBUMINURIA
- PFT, ECG
- TMT 2D ECHO
- X RAY CHEST, SONOGRAPHY ABDOMEN
- CONSULTATION-PHYSICIAN
- CONSULTATION-SURGEON
- CONSULTATION-DENTIST
- CONSULTATION-DIETICIAN



### NIDHI GOLD WOMAN 7500/-

- CBC
- FBS /PPBS
- LIPID PROFILE
- KIDNEY PROFILE
- LIVER PROFILE
- SKELETAL PROFILE
- ELECTROLYTES
- PAP SMEAR
- INFECTIOUS DISEASE
- HORMONES
- HbA1C
- VIT B 12
- VIT D3
- URINE MICROALBUMINURIA
- PFT, ECG
- TMT 2D ECHO
- X RAY CHEST, SONOGRAPHY ABDOMEN
- CONSULTATION-PHYSICIAN
- CONSULTATION - GYNAECOLOGIST
- CONSULTATION-SURGEON
- CONSULTATION-DENTIST
- CONSULTATION-DIETICIAN



### NIDHI COLON CANCER SCREENING CHECK-UP 6350/-

- CBC
- CRP
- CEA
- STOOL ANALYSIS
- SONOGRAPHY OF ABDOMEN
- COLONOSCOPY
- CONSULTATION - SURGEON



Your Happiness is a reflection of your health

Your Body is your most priceless possession, do take care of it

### NIDHI SPECIAL GASTRO - MAN 20000/-

- CBC
- DIABETIC PROFILE
- LIPID PROFILE
- KIDNEY PROFILE
- LIVER PROFILE
- SKELETAL PROFILE
- ELECTROLYTES
- INFECTIOUS DISEASE
- HORMONES
- PFT, ECG
- TMT 2D ECHO
- X RAY CHEST, SONOGRAPHY ABDOMEN
- CT ABDOMEN & PELVIS
- UGI ENDOSCOPY
- COLONOSCOPY
- CONSULTATION-PHYSICIAN
- CONSULTATION-SURGEON
- CONSULTATION-DENTIST
- CONSULTATION-DIETICIAN



### NIDHI SPECIAL GASTRO - FEMALE 20000/-

- CBC
- DIABETIC PROFILE
- LIPID PROFILE
- KIDNEY PROFILE
- LIVER PROFILE
- SKELETAL PROFILE
- ELECTROLYTES
- PAP SMEAR
- INFECTIOUS DISEASE
- HORMONES
- PFT, ECG
- TMT 2D ECHO
- X RAY CHEST, SONOGRAPHY ABDOMEN
- CT ABDOMEN & PELVIS
- UGI ENDOSCOPY
- COLONOSCOPY
- CONSULTATION-PHYSICIAN
- CONSULTATION-SURGEON
- CONSULTATION-DENTIST
- CONSULTATION-DIETICIAN



### NIDHI SPECIAL NRI-MAN 23000/-

- CBC
- DIABETIC PROFILE
- LIPID PROFILE
- KIDNEY PROFILE
- LIVER PROFILE
- SKELETAL PROFILE
- ELECTROLYTES
- INFECTIOUS DISEASE
- HORMONES
- PFT, ECG
- TMT 2D ECHO
- X RAY CHEST, SONOGRAPHY ABDOMEN
- CT BRAIN
- CT THORAX
- CT ABDOMEN & PELVIS
- UGI ENDOSCOPY
- COLONOSCOPY
- CONSULTATION-PHYSICIAN
- CONSULTATION-SURGEON
- CONSULTATION-DENTIST
- CONSULTATION-DIETICIAN



### NIDHI SPECIAL NRI-WOMAN 24000/-

- CBC
- DIABETIC PROFILE
- LIPID PROFILE
- KIDNEY PROFILE
- LIVER PROFILE
- SKELETAL PROFILE
- ELECTROLYTES
- PAP SMEAR, HORMONES
- INFECTIOUS DISEASE
- PFT, ECG
- TMT 2D ECHO
- X RAY CHEST, SONOGRAPHY ABDOMEN
- BIL. MAMMOSONOGRAPHY
- CT BRAIN
- CT ABDOMEN & PELVIS
- CT THORAX
- UGI ENDOSCOPY
- COLONOSCOPY
- CONSULTATION-PHYSICIAN
- CONSULTATION - GYNAECOLOGIST
- CONSULTATION-SURGEON
- CONSULTATION-DENTIST
- CONSULTATION-DIETICIAN



Today's life style is very hectic, extended working hours and irregular eating habits make us prone to lot of Physical and Mental problems.

Nidhi Hospital is striving hard to make you achieve the optimum health for your well-being. Come and join us in this endeavour and we promise you a healthy future.

### BEST PRACTICES ✿ QUALITY SERVICES ✿ AFFORDABLE RATES ✿ NO SURCHARGES

### CASHLESS MEDICLAIM & PPN PACKAGES AVAILABLE FOR MAJOR INSURANCE & TPA COs.


### EMPANELLED CORPORATES


**Nidhi Hospital**  
Adding Health to Life

**निधि होस्पिटल**

स्टेडियम कोमर्स रोड, नवरंगपुरा, अमदावाद-380 006  
ફોન : ૦૭૯-૪૦૨૩ ૨૧૨૧ / ૨૫,૨૬૪૨ ૬૬૩૧, ૨૬૪૨ ૬૬૫૧  
મો. : +૯૧ ૯૮૯૮૭ ૪૨૧૨૧

nidhihospital2011@gmail.com  
www.nidhihospital.org



For Appointments & Inquiries kindly contact

**Dr. Vibhuti**  
94096 00195

**Pratiksha**  
91733 22474

www.nidhihospital.org

www.nidhihospital.org